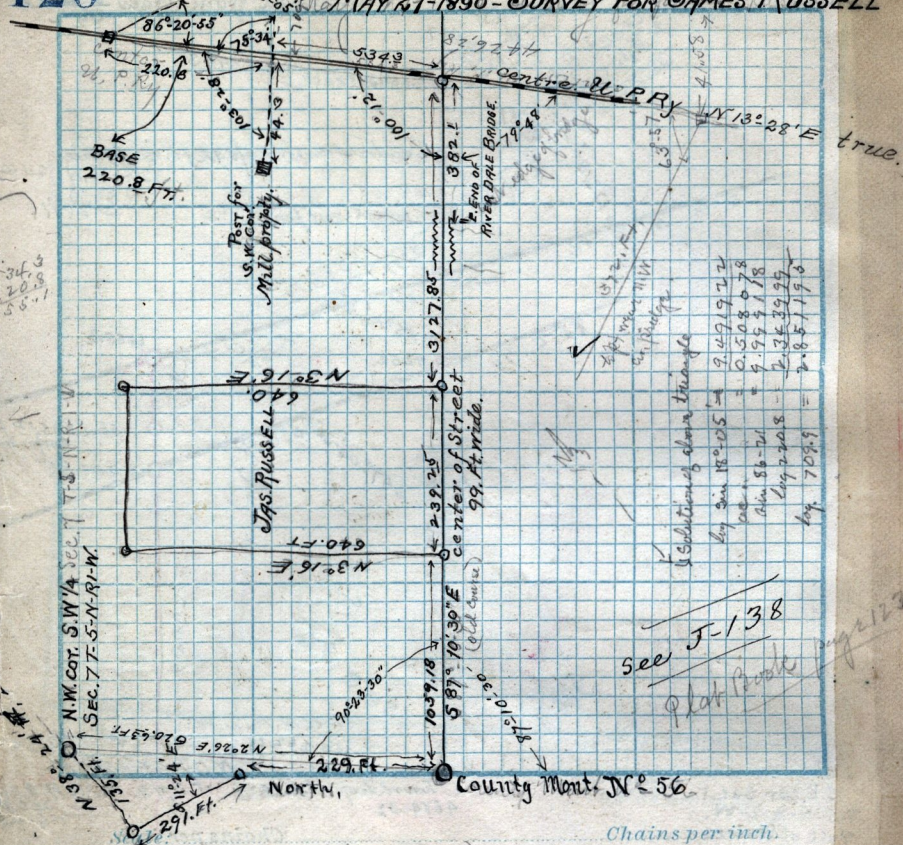


= N.E. cor. S E 1/4 SEC. 7 T-5-N-R-1-W

MAY 27-1890 - SURVEY FOR JAMES RUSSELL



Solutions shown triangle
 by sin 18° 05' = 9.47972
 cos 18° 05' = 9.528673
 sin 56° 21' = 9.554178
 cos 56° 21' = 2.353995
 by 705.9 = 2.851196

see J-138
 Plat Book page 2129

Chains per inch.

(see 129)

see description on page 118 this book. Wm Brown to J. M. & M. S. Browning, Pt Lot 6 B-17.
 3 q. 9 ft N. of S.W. cor. N 20. ft E 150 ft S 4 W. to bay. "b" off the N. side after
 owned by Browning to Douglas.
 June 6-1940

Copy of deed from Wm C. Warren to J. M. & M. S. Browning, ✓
 Pt Lot 5-B-17-Plat "A" O.C.S. Req. 84 feet N. of S.W. cor. of Lot
 N 15 5/10 ft E 82 5/10 ft. S 15 5/10 ft - N. 82 1/2 ft to bay.

Copy of deed from W. C. Warren & wife to J. M. & M. S. Browning. Part of
 Lot 6-B-17-Plat "A." O.C.S. Req. S.W. cor. Lot 6, - 79 1/2 ft, E 150. ft, ✓
 N 72 1/2 ft, E. to channel of Water Canal S.E. in canal to a point .56 of 1 ch
 N. of S.E. cor. of Lot. N. 4.44 ch to bay.

Copy of deed from Johnathan Browning to Jos. Black & others ✓
 Pt Lot 5-B-17-Plat "A" Req. 99 1/2 ft N. of S.W. cor. of Lot. E 5 Rds 399 1/2 ft, E 15 R.
 N 8 Rds to the E. cor. of Lot. W 20 R. E. N.W. cor. of Lot. 332 1/2 ft more or less to bay.